



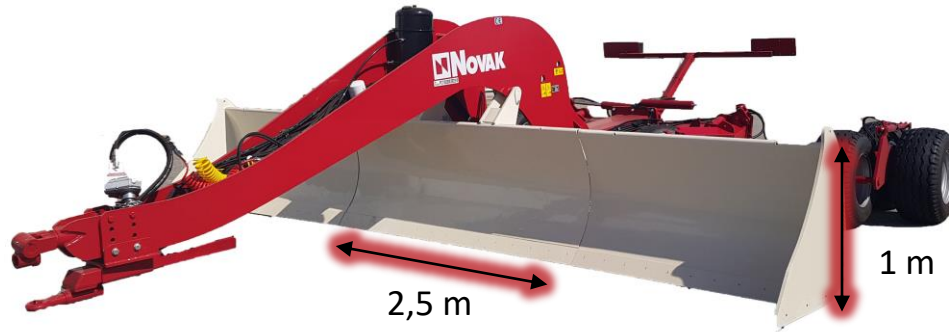
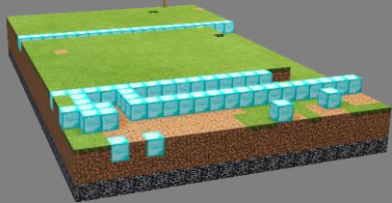
NOVAK

The advantages of NOVAK levellers

- The machine works quickly on any kind of terrain
- Two machines in one, thanks to the possibility of using the leveller even at 2.5 meters with the sections of the blade are closed (MASTER only)
- The receiver mast is equipped with an electronic reading of the quota that is shown on the control box digit and facilitates the survey and work execution phase
- Reliability also ensured by 2 years warranty

MASTER NOVAK leveller

Ideal for agriculture and earthmoving



Two working widths
2,5
meters

5 6 7
meters

High speed and precision with NOVAK axles

Closed butterfly axle



Open butterfly axle



The MASTER - 60 and 70 have the butterfly axle and two three-wheel balancer in the standard equipment; the variable working width together with the three wheels ensures the speed of 10 - 12 km / h.

Blade opening towards the back of the machine

With the open blade:



- • Two levellers in one
- • Speed and precision in leveling land of big dimensions

The MASTER range can be used both with the blade closed or open. This technical characteristic has an advantage in two different fields: by opening the blade (5, 6, 7 m), you can normally level the ground and then ...

Blade opening towards the back of the machine

With the closed blade:



- • Two levellers in one
- • Tractor with little towing power and small size

... by closing it and using only the central section of the blade (2.5 m working width), for example to level a white road.